

Technical Data Sheet

BITULINE® RP35S-V (-20°C Cold bending)

BITULINE®



Product definition

BITULINE® RP35S-V is Elastomeric, petroleum bitumen waterproofing membrane modified by SBS.

Flexibility at low temperature: -20°C.

Upper surface is protected by sand particles with special additives, bottom surface is self-adhesive and protected by silicone PE release film.

Compound: Elastomeric bitumen; petroleum bitumen modified with SBS and specific thermoplastic polymers

RP31S-V●

RP35S-V●

RP41S-V●

RP45S-V●

Where to use and Properties

- BITULINE® RP35S-V is suitable for blind side waterproofing of building foundations.
- BITULINE® RP35S-V, is suitable to use vertical.
- Pre-applied: Fixed before placing reinforcement and casting concrete,

Properties;

- Bottom surface is self-adhesive and protected by silicone PE release film. Sand particles with special additives integrated into the upper surface of the Resista membranes perfectly adhere to the concrete thanks to the heat of hydration released during the formation of the concrete, providing a permanent integrity and continuous adhesion.
- Self-adhesive membrane is easy and quick to apply.
- The reinforcement can be installed directly over the membrane.
- Bituline is resistant to harmful underground conditions.
- High flexibility capabilities at low temperature (-20 °C)
- High watertightness.
- BITULINE® waterproofing system is %100 watertight, flexible and long lasting.

Technical data

Length	10 m (TS EN 1848-1; min. -0,03)
Width	1 m (TS EN 1848-1; min. -0,02)
Straightness	PASS (TS EN 1848-1)
Thickness	3,5 mm (TS EN 1849-1; ± 0,2 mm)
Joint strength	800 N/50mm (TS EN 12317-1; ±%30)
Tensile strength (longitudinal)	1000 N/50mm (TS EN 12311-1; min.%0, max. +%50)
Elongation at break (longitudinal)	%35 (TS EN 12311-1; min.0, max. +20)
Tensile strength (transversal)	800 N/50mm (TS EN 12311-1; min.%0, max. +%50)
Elongation at break (transversal)	%35 (TS EN 12311-1; min.0, max. +20)
Resistance to tearing	200 N (TS EN 12310-1; ± %30)
Resistance to impact	1000 mm (TS EN 12691 method A; min.)
Resistance to static loading	20 kg (TS EN 12730 method B; min.)
Flexibility at low temperature	-20 °C (TS EN 1109; max.)
Watertightness	PASS (EN 1928 method B 60 kPa)
Flow resistance at elevated temperature	≥100 °C (TS EN 1110; min.)
Adhesion of granules	%30 (TS EN 1296 / TS EN 1109; max.)
Reaction to fire	E (TS EN 13501-1)
Water vapor transmission	20.000 (TS EN 1931; min.)
Artificial ageing behaviour	PASS (TS EN 1847/TS EN 1928 method B 60 kPa)
Artificial ageing behaviour	≥100 °C (TS EN 1296/TS EN 1928 method B 60 kPa)
Hydrostatic Pressure resistance	Psi (70 m ASTM D 5385)
Lateral water migration resistance	≥100 psi (70 m ASTM D 5385 modified)
Peel adhesion to concrete	Average 3700 N/m (ASTM D 903)
Adhesion to a given substrate under peel forces	Average 3,89 N/mm (EN ISO 22631)

Tools:

Roofing torch, trowel, knife and gloves.

Packaging:

Rolls/pallet	: 25 rolls
Qty/pallet	: 250 m ²
Weight/pallet	: ±1050 kg

Storage

Protect material from heat and direct sunlight.
Keep rolls in a vertical position and do not stack them.

Onduline Avrasya A.Ş.
Değirmen sokak Nida kule
No:18 Kat: 8 Kozyatağı İstanbul · Turkey
Phone: +90 216 384 16 00
www.onduline.com.tr

Onduline®
AVRASYA A.Ş.

Technical Data Sheet

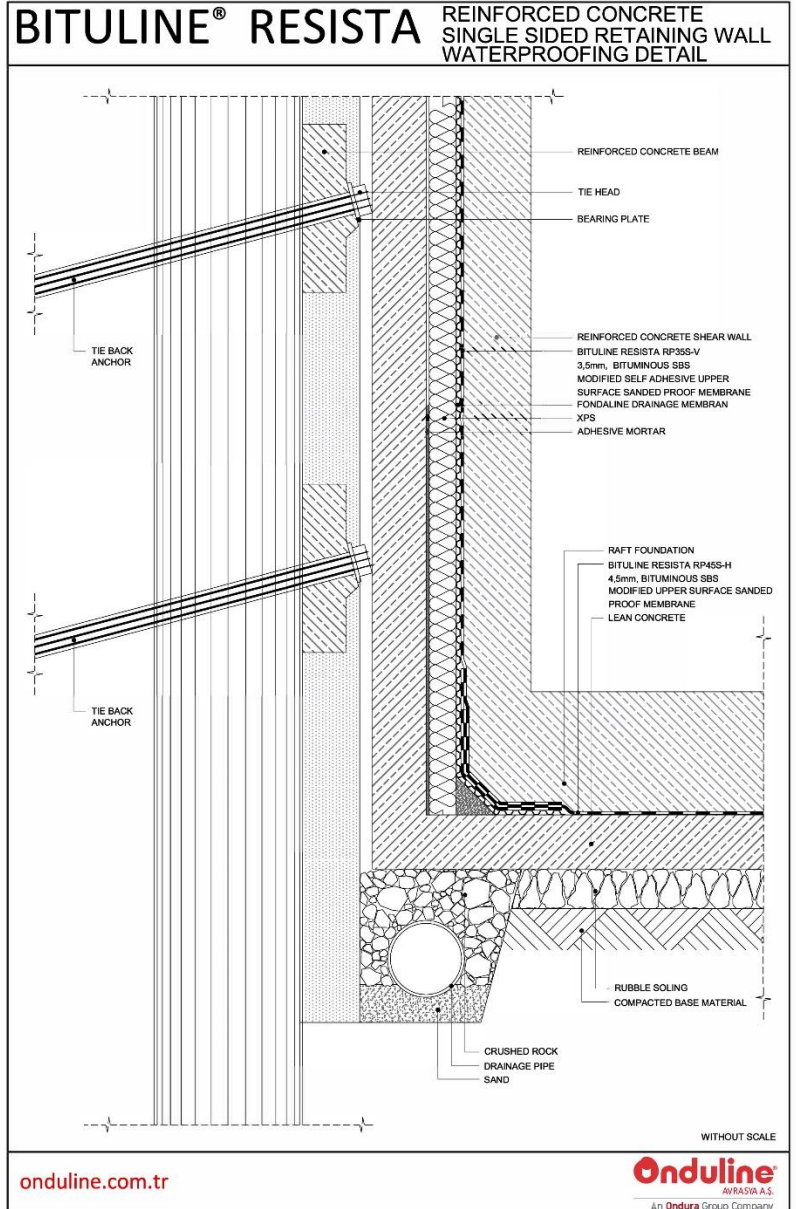
BITULINE® RP35S-V (-20°C Cold bending)

BITULINE®

BITULINE® RP35S-V Application steps on Reinforced concrete Shear Wall

1. Chamfer the up-stand corners with right angle joints by repair mortar, mastic sealant or angle fillet.
1. BITULINE® RP35S-V can be used with XPS heat insulation sheets, Fondaline® HDPE drainage sheets or both, XPS and Fondaline® in compliance with the engineer's project.
3. **Fasten the top end of BITULINE® RP35S-V mechanically and lay the membrane vertically. Remove the top of the release film and stick the membrane on the substrate, making sure it is carefully aligned. Slowly remove the silicon release film while making sure the membrane is fully adhered before bonding to the substrate.**
4. Seal around penetrations such as pipes, piles, lightning conductors, cables, etc. with steel flanges. Grout around the penetration if needed.
4. BITULINE® RP35S-V, should be installed on the retaining wall **making sure that 300 mm is installed on the footing.** Ensure that side laps are overlapped by 10 cm and end laps are overlapped by 15 cm; all overlaps and transverse joints should be thermally bonded with roofing torch. The top and bottom sides of the overlappings are heated up and they are pressed until the bitumen comes out. The excess bitumen should be smoothed by pressing with a trowel.
5. To prevent any damage to the top edge of BITULINE® use aluminium Z profiled flashing and seal with UV resistant silicone mastic.

RP31S-V●
RP35S-V●
RP41S-V●
RP45S-V●



Onduline Avrasya A.Ş.
Değirmen sokak Nida kule
No:18 Kat: 8 Kozyatağı İstanbul · Türkiye
Telefon: +90 216 384 16 00
www.onduline.com.tr



Onduline®
AVRASYA A.Ş.

Technical Data Sheet

BITULINE® RP35S-V (-20°C Cold bending)

BITULINE®

BITULINE® RP35S-V Consumption

Product	Consumption
BITULINE® RP35S-V	~1,13 m ² BITULINE® RP35S-V membrane is used in 1 m ² . The lengthwise membrane is used in 1 m ² . The lengthwise laps are overlapped by 15±1 cm. The crosswise laps are overlapped by 10 cm.

RP31S-V●
RP35S-V●
RP41S-V●
RP45S-V●

BITULINE® RP35S-V General warnings

1. With temperatures below +5°C and higher than +35°C it is better to avoid the application.
2. On cold weather keep BITULINE® RP35S-V for 24 hours stored in a covered storage area (+5 °C) before application.
3. Special care is required when unrolling BITULINE® RP35S-V sheets to not damage the membrane.
4. Special care is required during installation to avoid damage to waterproofing membranes. If it is impossible to restrict access to the waterproofing professionals alone, temporary protection must be employed to protect the membrane from the level of traffic

BITULINE® RP35S-V Safety rules

1. Think safety first. Wear PPE.
2. Always have one (minimum 6 kg) multi-purpose dry powder fire extinguisher in the application area.

OndulineAvrasya A.Ş. is not responsible for product, information, service and printing errors.